

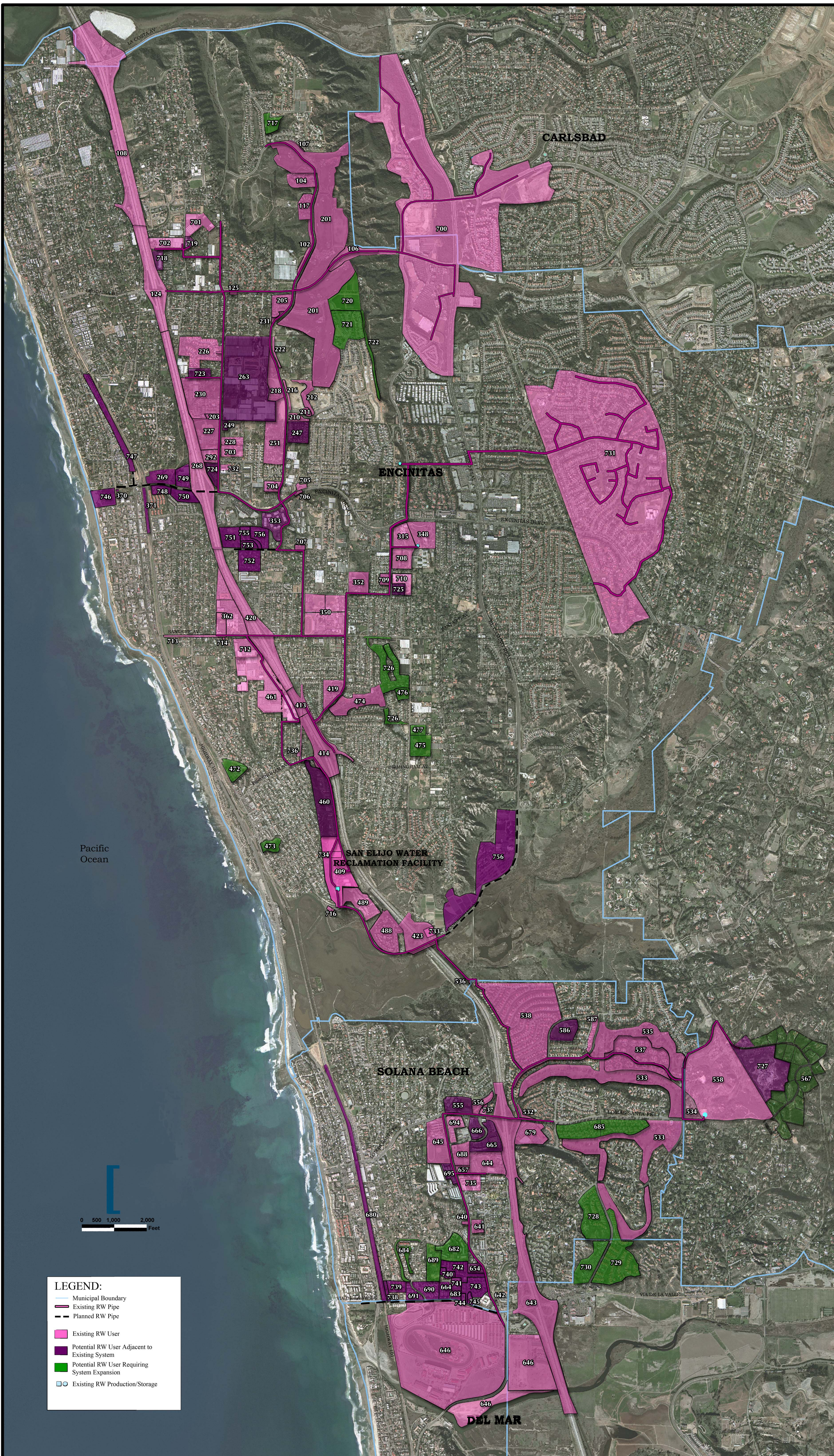
RECYCLED WATER SYSTEM USERS

EXISTING USERS

ID NO.	USER NAME	USER LOCATION	ACTUAL DEMAND (AFY)
102	City of Encinitas	Quail Gardens Dr.	6.6
104	Encinitas Ranch (37 Ranch Road) HOA	Ranch Road	6.2
106	City of Encinitas	Quail Gardens Dr.	10.0
107	Quail Hollow HOA	Quail Gardens Dr.	2.7
108	Caltrans	Pineau La Costa	3.3
117	Quail Ridge HOA	Quail Gardens Dr.	2.7
124	Caltrans	Leucadia Blvd.	8.0
125	City of Encinitas	Leucadia Blvd.	8.8
201	Encinitas Ranch Golf Course	Leucadia Blvd.	309.4
203	Saxony Office Buildings	Saxony Pl.	2.9
205	Encinitas Ranch (Devonshire) HOA	Quail Gardens Dr.	3.3
210	Encinitas Ranch HOA	Las Verdes	2.4
211	City of Encinitas	Las Verdes	6.4
212	City of Encinitas	Las Verdes	8.4
216	City of Encinitas	Las Verdes	0.6
218	City of Encinitas	Eske Ranch Rd.	1.3
222	City of Encinitas	Quail Gardens Dr.	1.1
226	Poinsettia Park HOA	Saxony Ave.	1.2
227	Eske Sports Park/ City of Encinitas	Saxony Ave.	9.0
228	Sagecrest Village	Saxony Ave.	4.4
230	Saxony HOA	Saxony Ave./ Silver Berry Pl.	2.2
231	Encinitas Ranch (Sidonia East)	Quail Gardens Dr.	0.1
251	Quail Botanical Gardens	Quail Gardens Dr.	50.0
268	Caltrans	Encinitas Blvd.	8.8
292	Eske YMCA Expansion	Saxony Ave.	3.0
315	Encinitas Community and Senior Center	Oak Crest Park Dr.	4.7
348	City of Encinitas (Oak Crest Park)	Oak Crest Park Dr.	10.0
350	San Dieguito Academy	Santa Fe Dr.	12.8
352	Encinitas USD (Ocean Knoll School)	Melba Rd.	10.0
362	Scripps Hospital	Santa Fe Dr.	10.0
409	San Eljo Joint Powers Authority	Manchester Ave.	57.5
413	Caltrans	Villa Carrifil	8.8
414	Caltrans	Birmingham Villa Carrifil	6.1
419	Ada Harris School	Windsor Ave.	8.1
420	Caltrans	Santa Fe Dr.	12.4
423	Caltrans	Manchester Ave.	10.0
461	Encinitas Community Park	499 Santa Fe Dr.	30.0
474	Park Place HOA	Windsor Ave.	25.0
488	Cardiff Cove HOA	Manchester Ave.	17.0
489	Seaside HOA	Manchester Ave.	0.8
532	Lomas Santa Fe Villas HOA	Via Mill Cumbrus	5.1
533	Lomas Santa Fe Country Club	Lomas Santa Fe Dr.	210.6
534	San Dieguito Park/ County of SD	Highland Dr.	3.3
535	Lomas Santa Fe Executive Golf Course	Santa Fe Rd.	52.6
536	Stighon Station/ City of Solana Beach	Santa Inez	0.0
537	St. Francis HOA	Sun Valley Rd.	53.9
538	Santa Fe Hills HOA	Santa Helena	20.6
556	Solana Mar Apartments	Lomas Santa Fe Dr.	5.0
558	San Dieguito Park (Phase II)	Lomas Santa Fe Dr.	45.0
587	San Eljo Hills II	Santa Helena	2.9
640	City of Solana Beach	Stevens Ave.	1.1
641	La Colonia Park/ City of Solana Beach	Stevens Ave.	6.2
642	City of Solana Beach	Valley Ave.	9.6
643	Caltrans	Lomas Santa Fe Dr.	73.4
644	Santa Fe Christian School	Academy Dr.	12.8
645	Earl Warren Middle School	Stevens Ave.	13.2
646	Del Mar Fairgrounds	Jimmy Durante Blvd.	70.0
657	Shepard Medical	Stevens Ave.	0.5
679	Vons Shopping Center	Lomas Santa Fe Dr.	20.0
688	Solana Mar Corporate Center	Stevens Ave.	10.0
694	Presbyterian Church	Stevens Ave.	5.0
700	Olivenhain Municipal Water District	La Costa	135.0
701	Seaside Ridge HOA	Uranian Ave.	0.9
702	Elms HOA	Stevens Ave.	1.0
703	Seacrest Village II	Saxony Ave.	3.9
704	Quail Pointe HOA (Far West)	Quail Gardens Dr.	1.3
705	Quail Gardens Corporate Center	Encinitas Blvd.	0.6
706	City of Encinitas	Encinitas Blvd.	0.6
707	Sunset High School	Requeza St.	1.0
708	Oak Crest Middle School	Balour Dr.	9.7
709	St. Andrews Church	Balour Dr.	1.4
710	Warminster Res. (Seaside Highlands HOA)	177 Santa Fe Ave.	0.1
712	Santa Fe Shopping Center	Santa Fe Ave.	1.0
713	City of Encinitas	Santa Fe Ave.	1.5
714	Gil Calloway	301 Santa Fe Ave.	0.1
716	San Eljo Lagoon Nature Center	177 Manchester Ave.	0.2
732	Mammoth Equities	Saxony Ave.	0.5
733	Olivenhain Sewage Pump Station	3050 Manchester Avenue	0.6
734	City of Encinitas (Sewer Department)	2605 Manchester Avenue	0.1
735	Solana Corporate Center (S.C.)	500 Stevens Avenue	0.2
736	Fire Station No. 2	614 Birmingham Drive	3.8
737	Atlantic States Bank	706 Lomas Santa Fe Drive	1.5

POTENTIAL NEW USERS

ID NO.	USER NAME	USER LOCATION	EST. DEMAND (AFY)
247	Quail Gardens HOA	Quail Gardens Dr.	8.0
249	Saxony Medical Office Buildings	Saxony Ave.	10.0
263	Eske Home Development	Saxony Ave.	25.0
269	Cottonwood Creek Park	North Vulcan St.	10.0
353	North Coast Business Park	Encinitas Blvd.	5.0
370	Moonlight Beach Sewage PS	Encinitas Blvd.	6.0
371	Encinitas Train Station	Volcan Ave.	3.0
460	Cardiff Apartments	Birmingham Dr.	7.0
472	George Berkech Park	Montgomery	12.0
473	Clen Park	Orrida Dr.	8.0
475	Cardiff Sports Park	Lake Dr.	17.0
476	Church of Jesus Christ Latter Day Saints	Lake Dr.	2.0
477	Seaside Church of Religious Science	Lake Dr.	4.0
555	Skyline School	Lomas Santa Fe Dr.	15.0
567	Rancho Santa Fe Estate Lots	177 Manchester Dr.	70.0
586	Santa Victoria School	Santa Victoria	10.0
634	Espirit Apartments	Stevens Ave.	5.0
664	Del Mar Condos	Via De La Valle	8.0
665	East Lomas Santa Fe Ctr.	San Rodolfo Dr.	10.0
666	West Lomas Santa Fe Ctr.	San Rodolfo Dr.	10.0
680	Solana Beach Rail Trail	Pacific Highway 101	5.0
682	South Nardo Apartments	South Nardo Ave.	15.0
683	Lutheran Church	Via De La Valle	3.0
684	Park Del Mar	E. Solana Cir.	5.0
685	Lomas Santa Fe C.C. Villas	Lomas Santa Fe Dr.	40.0
689	Saint James Church	South Nardo Ave.	5.0
690	Saratoga West	Via De La Valle	10.0
691	Sea Surf	Via De La Valle	5.0
695	Sure Guard Storage	Stevens Ave.	2.0
717	Park	Blue Heron Ave.	4.0
718	Woolner's Garden	Normandy Rd.	4.0
719	Storm Property	Normandy Rd.	3.0
720	Open Space	Paseo De Las Flores	5.0
721	HOA	Paseo De Las Flores	5.0
722	City of Encinitas	Cambria Gardens Trail	1.0
723	Dan Croot Property	Union St.	1.0
724	Brighton Condon	Saxony Rd.	2.0
725	Bethlehem Lutheran Church	Balour Dr.	1.0
726	Park Place Bluffs	Lake Dr.	3.0
727	Estate Property	El Camino Real	40.0
728	Las Vistas HOA	San Andreas Dr.	5.0
729	Las Brisas Del Mar HOA	San Andreas Dr.	5.0
730	Lomas Del Mar HOA	San Andreas Dr.	3.0
731	Village Park	Olivenhain	300.0
738	Sandpiper Apartments	Via De La Valle	1.0
739	La Mar HOA	Via De La Valle	2.5
740	Del Mar Legends HOA	Via De La Valle	1.0
741	La Vida Del Mar	Via De La Valle	1.0
742	Turfco Management Association	Via De La Valle	8.5
743	Triple Crown HOA	Via De La Valle	6.0
744	Ocean Point I	Via De La Valle	0.5
745	Ocean Point II	Via De La Valle	0.5
746	Moonlight Beach	Encinitas Blvd.	7.0
747	City of Encinitas	Encinitas Blvd.	3.0
748	Commercial - Hotel	Encinitas Blvd.	4.0
749	Commercial - Retail	Encinitas Blvd.	3.0
750	Commercial - Hotel/Restaurant	Encinitas Blvd.	1.0
751	Beach Street HOA	Requeza Street	4.0
752	Regal View Owner's Association	Requeza Street	12.0
753	Brogan and Jones	Requeza Street	2.0
754	Encinitas Village HOA	Requeza Street	2.0
755	Villa Blanca	Requeza Street	1.0
756	Olivenhain - Manchester	Manchester Avenue	14.0



LEGEND:

- Municipal Boundary
- Existing RW Pipe
- Planned RW Pipe
- Existing RW User
- Potential RW User Adjacent to Existing System
- Potential RW User Requiring System Expansion
- Existing RW Production/Storage